

Centre Number						Candidate Number				
Surname										
Other Names										
Candidate Signature										

For Examiner's Use	
Examiner's Initials	
Question	Mark
1	
2	
3	
4	
5	
6	
TOTAL	



General Certificate of Education
Advanced Level Examination
June 2012

Mathematics

MM04

Unit Mechanics 4

Monday 25 June 2012 1.30 pm to 3.00 pm

For this paper you must have:

- the blue AQA booklet of formulae and statistical tables.

You may use a graphics calculator.

Time allowed

- 1 hour 30 minutes

Instructions

- Use black ink or black ball-point pen. Pencil should only be used for drawing.
- Fill in the boxes at the top of this page.
- Answer **all** questions.
- Write the question part reference (eg (a), (b)(i) etc) in the left-hand margin.
- You must answer each question in the space provided for that question. If you require extra space, use an AQA supplementary answer book; do **not** use the space provided for a different question.
- Do not write outside the box around each page.
- Show all necessary working; otherwise marks for method may be lost.
- Do all rough work in this book. Cross through any work that you do not want to be marked.
- The **final** answer to questions requiring the use of calculators should be given to three significant figures, unless stated otherwise.
- Take $g = 9.8 \text{ m s}^{-2}$, unless stated otherwise.

Information

- The marks for questions are shown in brackets.
- The maximum mark for this paper is 75.

Advice

- Unless stated otherwise, you may quote formulae, without proof, from the booklet.
- You do not necessarily need to use all the space provided.



J U N 1 2 M M 0 4 0 1

Answer **all** questions.

Answer each question in the space provided for that question.

- 1** A light rod has its ends at the points $P(-2, -1, 4)$ and $Q(4, 1, 6)$. A force \mathbf{F} acts at the point M , the mid-point of PQ , where $\mathbf{F} = a\mathbf{i} + \mathbf{j} - 2\mathbf{k}$.
- (a) Show that $\overrightarrow{PM} = 3\mathbf{i} + \mathbf{j} + \mathbf{k}$. (2 marks)
- (b) Find the moment of \mathbf{F} about the point P , giving your answer in terms of a . (3 marks)
- (c) Given that the magnitude of the moment is $5\sqrt{2}$, find the two possible values of a . (4 marks)

QUESTION
PART
REFERENCE

Answer space for question 1



QUESTION
PART
REFERENCE

Answer space for question 1

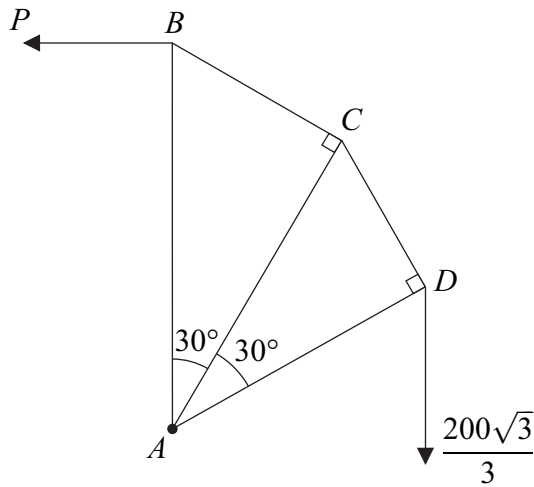
A large rectangular area for writing, bounded by a solid line on the top, bottom, and right, and a solid line on the left. The left side of this area is adjacent to the 'QUESTION PART REFERENCE' column. The interior of the box is filled with horizontal dotted lines, providing a guide for handwriting.



Turn over ►

- 2** A framework is composed of five light smoothly-jointed rods, AB , AC , AD , BC and CD . The framework contains two right-angled triangles, ABC and ACD . The angle $BAC = \text{angle } CAD = 30^\circ$. The lengths of AB , AC and AD are $2l$, $\sqrt{3}l$ and $\frac{3l}{2}$ respectively.

The framework is in equilibrium in a vertical plane and is freely hinged at A to a fixed support. A vertical force of $\frac{200\sqrt{3}}{3}$ N acts at D . The rod AB is kept vertical by a horizontal force of magnitude P newtons, acting in the same plane as the framework at B , as shown in the diagram.



- (a) Show that $P = 75$. (3 marks)
- (b) Find the magnitudes of the forces in the rods BC and AB , stating whether each rod is in tension or compression. (6 marks)
- (c) By considering the forces perpendicular to AC at the point C , find the magnitude of the force in the rod CD . (2 marks)
- (d) For each of the rods CD , AC and AD , state whether the rod is in tension or compression. (2 marks)

QUESTION
PART
REFERENCE

Answer space for question 2



QUESTION
PART
REFERENCE

Answer space for question 2

A large rectangular area with horizontal dotted lines for writing an answer.

Turn over ►



QUESTION
PART
REFERENCE

Answer space for question 2

A large rectangular area containing horizontal dotted lines for writing an answer.



QUESTION
PART
REFERENCE

Answer space for question 2

A large rectangular area containing horizontal dotted lines for writing an answer.



- 3** Four forces, acting in the x - y plane, act at the points with coordinates as listed below, where p and q are constants and \mathbf{i} and \mathbf{j} are parallel to the x -axis and y -axis respectively.

Force		Coordinates
$-2\mathbf{i}$	acting at	(3, 3)
$-5\mathbf{j}$	acting at	(4, 0)
$p\mathbf{i} + \mathbf{j}$	acting at	(-8, -2)
$-3\mathbf{i} - 4\mathbf{j}$	acting at	(0, q)

- (a) Write down the resultant of these forces in terms of p . *(1 mark)*
- (b) (i) Given that the system of forces is equivalent to a single force, \mathbf{F} , acting parallel to the y -axis, find the value of p . *(2 marks)*
- (ii) Given further that the equation of the line of action of \mathbf{F} is $x = 3$, find the value of q . *(6 marks)*
- (c) The system of forces can be replaced by a single force acting at the origin together with a couple C .

Write down the magnitude of C and indicate its sense on a diagram. *(2 marks)*

QUESTION
PART
REFERENCE

Answer space for question 3



QUESTION
PART
REFERENCE

Answer space for question 3

A large rectangular area with horizontal dotted lines for writing an answer.

Turn over ►



QUESTION
PART
REFERENCE

Answer space for question 3

A large rectangular area with horizontal dotted lines for writing an answer.



QUESTION
PART
REFERENCE

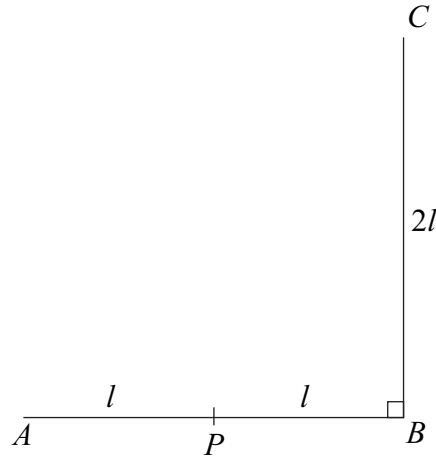
Answer space for question 3

A large rectangular area with horizontal dotted lines for writing an answer.

Turn over ►



- 4** Two identical uniform rods, AB and BC , are rigidly joined together to form a right angle at B . The mid-point of the rod AB is P . Each rod has mass m and length $2l$. The rods can rotate freely in a vertical plane about a horizontal axis through P , perpendicular to the plane containing ABC .



- (a) Show that the moment of inertia of the rod BC about the axis through P is $\frac{7ml^2}{3}$.
(4 marks)
- (b) Particles of masses $3m$, $3m$ and $4m$ are fixed at A , B and C respectively.
Find the moment of inertia of the whole system about the axis through P . (5 marks)
- (c) The system is released from rest with AB horizontal and C vertically above B .
Find, in terms of g and l , the angular velocity of the system when BC is horizontal and A is vertically above B . (7 marks)

QUESTION
PART
REFERENCE

Answer space for question 4

.....

.....

.....

.....

.....

.....

.....

.....

.....

.....

.....



QUESTION
PART
REFERENCE

Answer space for question 4

A large rectangular area with horizontal dotted lines for writing an answer.

Turn over ►



QUESTION
PART
REFERENCE

Answer space for question 4

A large rectangular area containing horizontal dotted lines for writing an answer.



QUESTION
PART
REFERENCE

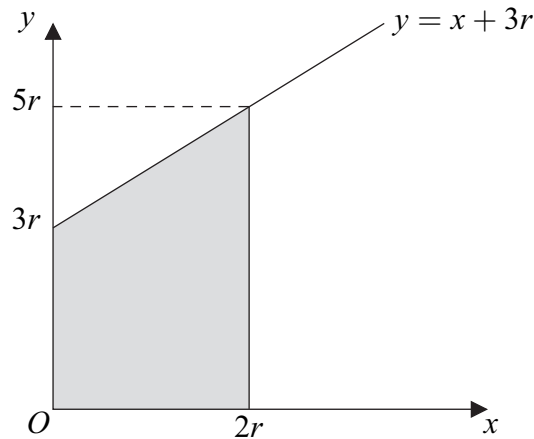
Answer space for question 4

A large rectangular area containing horizontal dotted lines for writing an answer.

Turn over ►

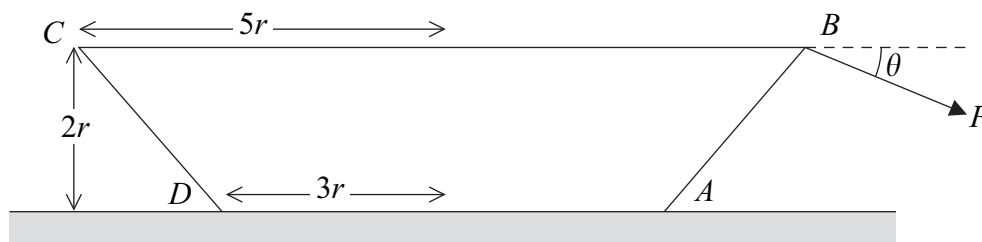


- 5 The region bounded by the line $y = x + 3r$, the y -axis, the x -axis and the line $x = 2r$ is shown in the diagram.



This region is rotated about the x -axis to form a frustum, of volume $\frac{98\pi r^3}{3}$, of a uniform solid cone.

- (a) Using integration, find the distance of the centre of mass of the frustum of the cone from O . (6 marks)
- (b) The frustum of a uniform solid cone with radii $3r$ and $5r$ and height $2r$ has weight W . The frustum stands on a horizontal surface. The diagram shows a cross-section, $ABCD$, which includes the axis of symmetry, of this frustum. A force P is applied to the point B and acts in the same plane as this cross-section at an angle of θ below the horizontal.



The frustum does not slide and is about to topple about A .

- (i) Show that

$$P = \frac{3W}{2(\cos \theta + \sin \theta)} \quad (4 \text{ marks})$$

- (ii) Find, in terms of W , the minimum possible value of P . (3 marks)
- (iii) State the value of θ for which P is a minimum. (1 mark)



QUESTION
PART
REFERENCE

Answer space for question 5

A large rectangular area containing horizontal dotted lines for writing an answer.



QUESTION
PART
REFERENCE

Answer space for question 5

A large rectangular area containing horizontal dotted lines for writing an answer.



QUESTION
PART
REFERENCE

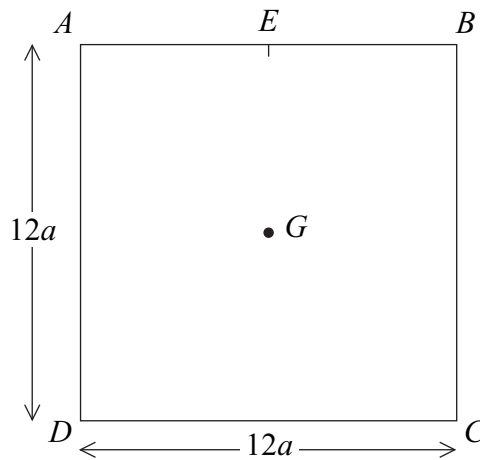
Answer space for question 5

Area containing horizontal dotted lines for writing the answer.

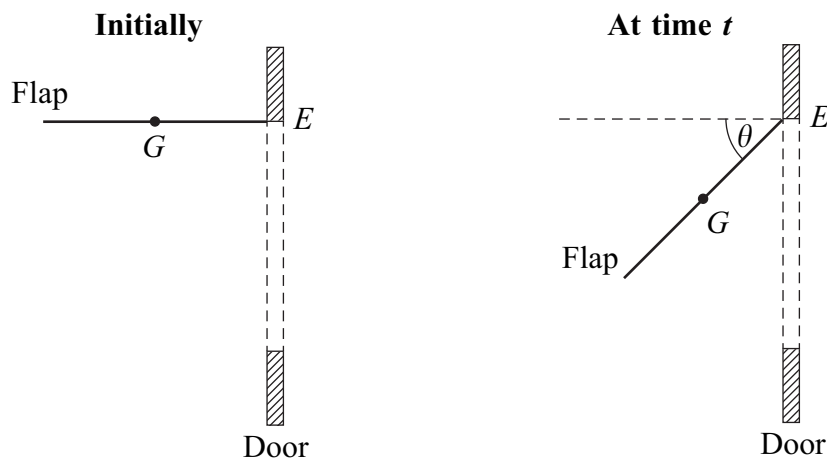
Turn over ►



- 6 A uniform lamina, of mass m , is in the shape of a square, $ABCD$, with each side of length $12a$. The centre of mass of the lamina is G , and the mid-point of AB is E .



- (a) Show, by using integration, that the moment of inertia of the square lamina about a fixed horizontal axis along the side AB is $48ma^2$. (5 marks)
- (b) A cat flap in a door can be modelled by the lamina described above. The flap is free to rotate about a fixed horizontal axis along AB . Initially, the flap is held at rest so that EG is horizontal, and it is then released. At time t after release, EG makes an angle θ with the horizontal.



- (i) Show that $\ddot{\theta} = \frac{g \cos \theta}{8a}$. (3 marks)
- (ii) Find, in terms of m , g and θ , the magnitude of the reaction that the flap exerts on the axis in the direction perpendicular to EG . (3 marks)
- (iii) State one improvement that could be made to the model. (1 mark)



QUESTION
PART
REFERENCE

Answer space for question 6

A large rectangular area containing horizontal dotted lines for writing an answer.

Turn over ►



QUESTION
PART
REFERENCE

Answer space for question 6

A large rectangular area containing horizontal dotted lines for writing an answer.



QUESTION
PART
REFERENCE

Answer space for question 6

A large rectangular area containing 25 horizontal dotted lines for writing an answer.

END OF QUESTIONS



There are no questions printed on this page

**DO NOT WRITE ON THIS PAGE
ANSWER IN THE SPACES PROVIDED**

